

RetroView colonoscopes

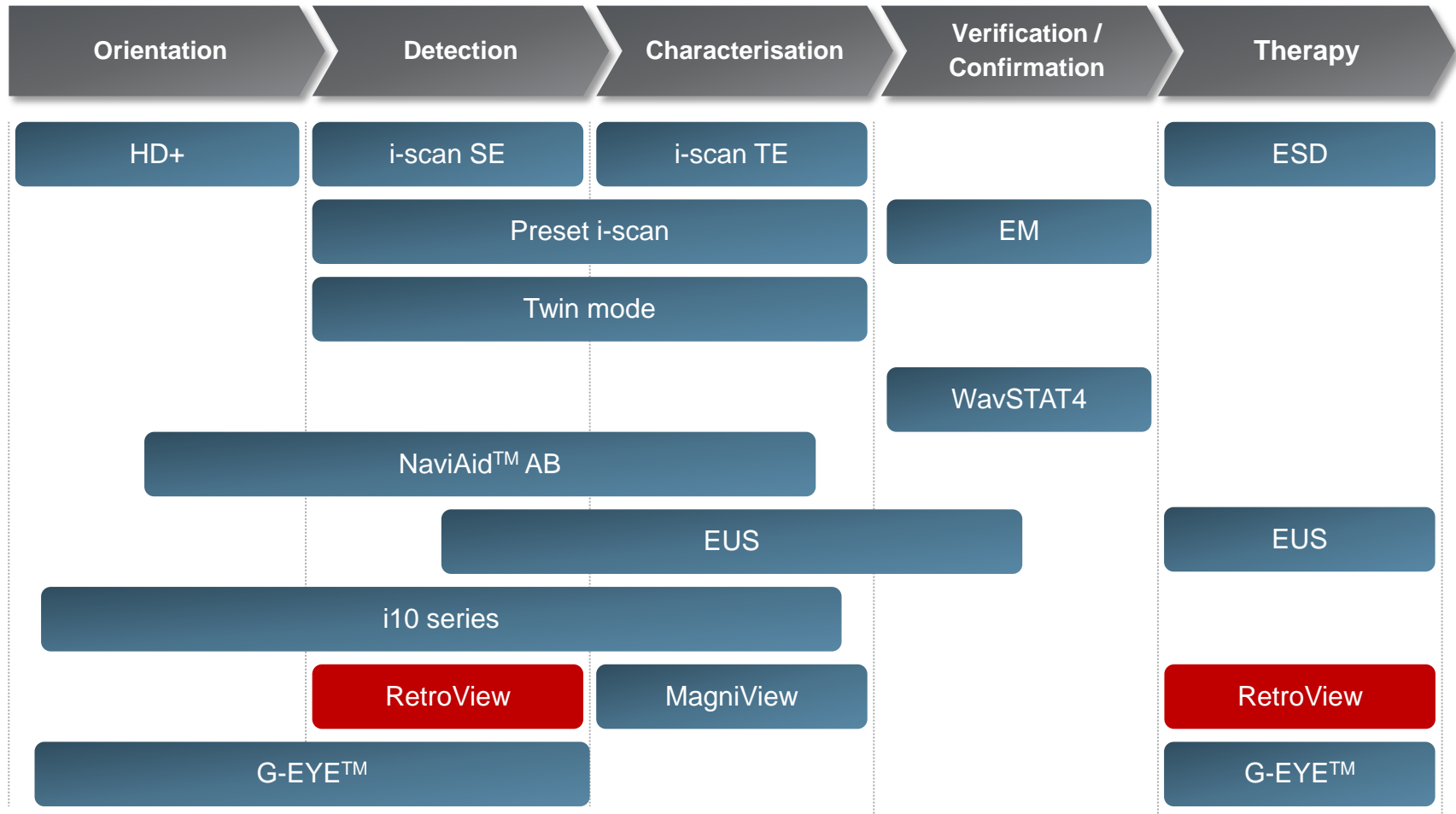
A high degree of flexibility



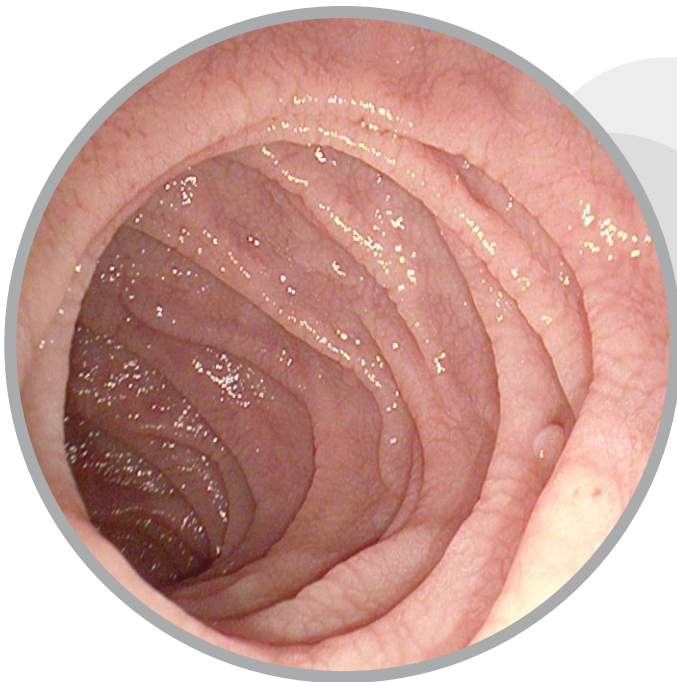
PENTAX
MEDICAL
Excellence in Focus

PENTAX Medical GI integrated offer

Along the clinical pathway



Main Challenge In colonoscopy



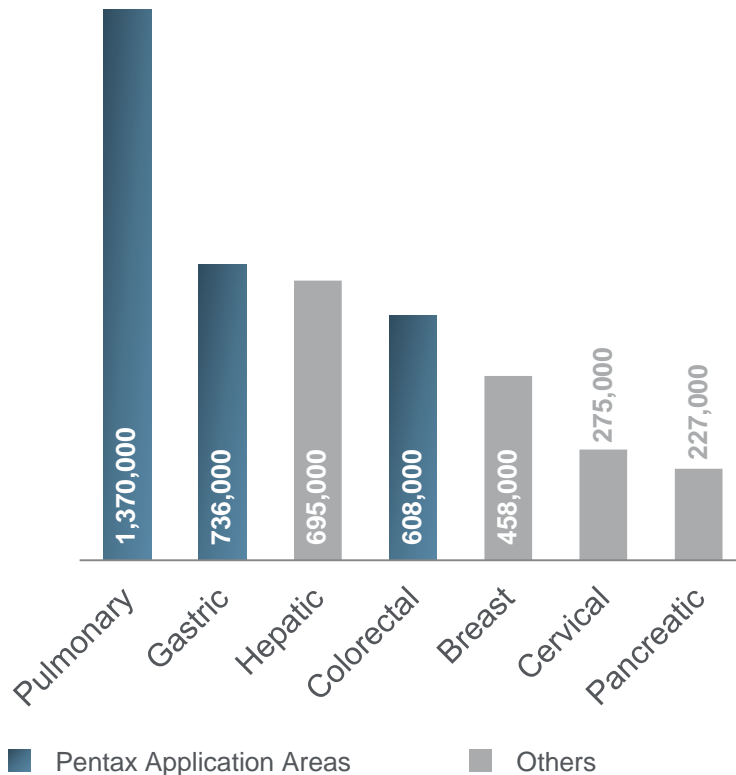
»The biggest diagnostic challenge in colonoscopy is to improve dysplasia detection and **reduce the miss rate** in detection of polyps and adenomas to prevent colorectal cancer (CRC), especially in the proximal colon.

Detected lesions need to be carefully characterized for a successful therapy.«

Main Challenge

Early detection

Cancer deaths worldwide



Colorectal malignancies is one of the leading causes of cancer-related deaths in the world. The **early detection and timely removal** of preneoplasms has been demonstrated to **significantly improve patient survival**.

Source: Leonardo Sosa Valencia and Erika Rodriguez-Wulff: "Topics in Prevention of Diseases in Gastroenterology";
In: Alfonso J. Rodriguez-Morales: Current Topics in Public Health (2008), P. 423.

Main Opportunities

Advanced detection and therapy

Clinical studies have shown potential opportunity for colonoscope reflection to **improve adenoma detection rates** and assist in more complete removal of adenomatous polyps.



RetroView, EC-3490Ti colonoscopes has been developed to support not only **detection** but also **advanced therapy**. This is due to **high degree of flexibility** to reach difficult location and a more complete removal of adenomatous polyps.

Our Promise

RetoView, a high degree of flexibility

With PENTAX Medical **RetoView HD+ colonoscopes** the combination of both detection and therapy of hard to reach lesions can now be undertaken.

RetoView colonoscope, for **advanced detection** and **therapy**.



Positioning

Clinical
Background

Product

Clinical
Application

Technical
Details

Summary

Services

Key Benefits Features

PENTAX
MEDICAL



**RetroView
EC-3490Ti**



Product

Clinical
Background

Positioning

Clinical
Application

Technical
Details

Summary

Services

Key Benefits

RetroView EC-3490Ti

1

Excellent manoeuvrability

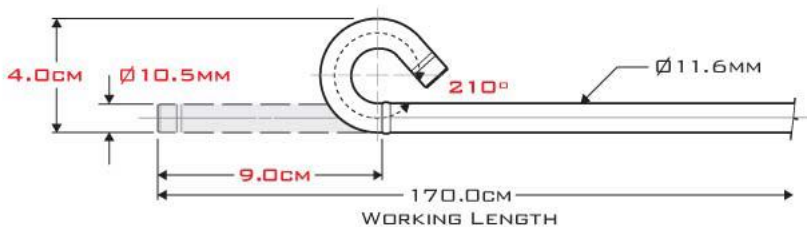
A unique approach while **navigating tight turns**. Excellent manoeuvrability due to **210° deflection and minimize bending radius** of the distal tip.

2

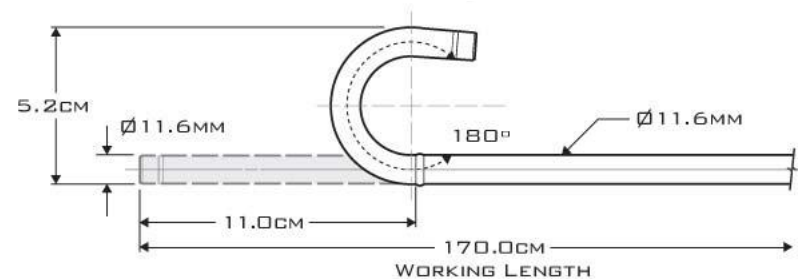
Advanced therapy

It provides a perfect combination of flexibility of the endoscope tip and stability of the endoscope body, thus providing a valuable contribution to **secure EMR or ESD**.

EC-3490TLi Video Colonoscope – RetroView™



EC-3490Li Video Colonoscope – Slim



Product

Clinical Background

Positioning

Clinical Application

Technical Details

Summary

Services

Key Benefits

RetroView EC-3490Ti

3 Advance detection

Outstanding combination of deflection (210°), visualization capability (HD+) and **excellent illumination** in combination with **i-scan** for better orientation and detection.

4 Improved HD+ image quality

Next generation megapixel CCD for improved HD+ image quality. Crisp, clear and bright endoscopic image combined with exceptional field of view for a **superior visualisation of the mucosa**.

5 Graduate flexibility (GDF)

Graduate flexibility of the insertion tube to increase **patient comfort** and examination performance during every colonoscopy.

Product overview

For best clinical results

RetroView EC-3490Ti is compatible with

RetroView
EC-3490Ti / Fi / Li*



EPK-i5000



EPK-i7000

* Available in different working lengths
(L = 1,700 mm, F = 1,700 mm, M = 1,300 mm)

Product

Clinical
Background

Positioning

Clinical
Application

Technical
Details

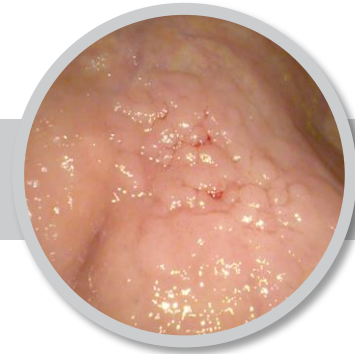
Summary

Services

Clinical Application

Detect and characterise

RetroView a high degree of flexibility with 210° deflection



Procedure related

- Enhance manoeuvrability in tight spaces
- Improved therapeutic access due to enhanced functionality
- Better visualization of the mucosa behind folds by examining the proximal colon and caecum in a RetroView function
- Intubating Terminal Ilium

Patient related

- Patient with acute sigmoid colon or redundant colon
- Polypectomies in difficult to reach locations
- Endoscopic Submucosal Dissection (ESD)
- Endoscopic Mucosal Resection (EMR)
- Patients with Irritable Bowel or Crohn's Disease

Clinical Application

Detect and define

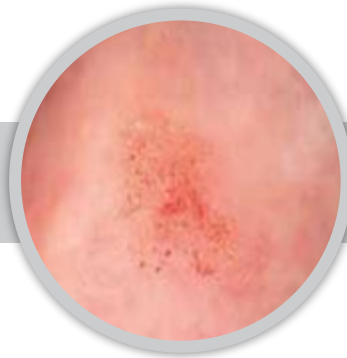
Enhance your endoscopic options with HD+ and i-scans setting



HD+

Flat lesion

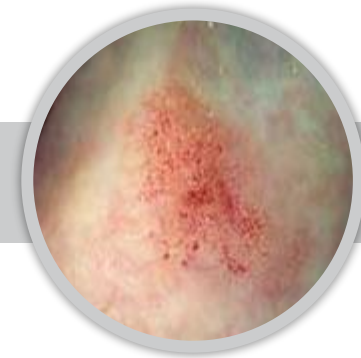
- Fast detection with significant improvement in the visibility and evaluation of minute lesions
- Integrated zoom function for more detailed inspection



i-scan

Surface Enhancement

- i-scan SE retains the natural colour tones
- Accentuation of tissue structures
- Mucosal enhancement potentially supports the detection of flat lesions



i-scan

Tone Enhancement

- Allows more accentuated display of mucosal structures which may support lesion characterization
- Virtual chromoendoscopy may help to improve endoscopic diagnosis

Reference Customers

Original quotations

» I am convinced that this scope could be an **excellent** answer to the missed adenomas especially on the right side of the colon.«

Dr. Kiesslich

St. Marien Hospital,
Frankfurt, Germany

» The new PENTAX EC-3490Ti is an **excellent** colonoscope for advanced work in difficult to reach locations. Its image quality exceeds my expectations and the new **210° distal tip angulation** in conjunction with the tighter bend radius mean it has the tip control needed to easily carry out **complex therapeutic** procedures, including EMR/ESD.«

Dr. Booth

Royal Berkshire NHS Foundation Trust, UK

» Procedure of **mucosal resection** in particular in the right colon by using retroflexion is **easy**.«

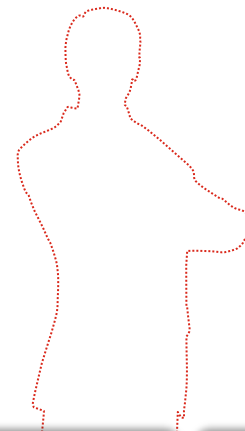
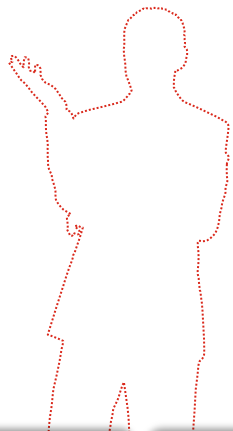
Dr. Giovannini

Institut Paoli-Calmettes,
Marseille, France

» **VERY POSITIVE** – many doctors of the team **prefer** this scope compared to the standard colonoscope.«

Dr. De Grazia

Ospedale Maggiore
Di Crema, Italy



Clinical
Background

Positioning

Product

Clinical
Application

Technical
Details

Summary

Services

RetroView EC-3490Ti

Specifications (1 / 2)

| | Specs | EC-3490TLi | EC-3490TFi | EC-3490TMi |
|-----------------------------|---------------------------|------------|------------|------------|
| Direction of view | Up / Down Right / Left | Forward | Forward | Forward |
| Field of view (°) | | 140 | 140 | 140 |
| Depth of field (mm) | | 3 ~ 100 | 3 ~ 100 | 3 ~ 100 |
| Tip angulation (°) | | 210 – 180 | 210 – 180 | 210 – 180 |
| | | 160 – 160 | 160 – 160 | 160 – 160 |
| ∅ Right distal width (mm) | | 10.5 | 10.5 | 10.5 |
| ∅ Distal end width (mm) | | 10.5 | 10.5 | 10.5 |
| ∅ Insertion tube width (mm) | | 11.6 | 11.6 | 11.6 |

RetroView EC-3490Ti

Specifications (2 / 2)

| | Specs | EC-3490TLi | EC-3490TFi | EC-3490TMi |
|--------------------------------------|-------|------------|------------|------------|
| Ø Max. inseration portion width (mm) | | 12.85 | 12.85 | 12.85 |
| Ø Min. instrument channel width(mm) | | 3.2 | 3.2 | 3.2 |
| Insertion tube working length (mm) | | 1,700 | 1,500 | 1,300 |
| Total length (mm) | | 2,023 | 1,823 | 1,623 |

Summary

RetroView EC-3490Ti at a glance

PENTAX Medical **RetroView** HD+ colonoscopes with deflection ability of **up to 210°** and shorter bending section offers a perfect combination for both **detection and therapy of difficult to reach lesions.**



Services

Our portfolio



Personal Consultancy

Advice and guidance in support of customers' performance, e.g.

- Process change
- Operational efficiency analysis
- Total cost of ownership
- Hygiene



Contract Maintenance

Portfolio of maintenance solutions that offers customers both guaranteed reliability and budget security, e.g.

- i-Trust
- Pay-per-use
- Rental



Premium Repair Service

Absolute quality guarantee and a fast repair turnaround time whilst keeping you up and running:

- Loaner program
- Original spare parts
- Small repairs on site
- Extensive repair network



Individual Training

Personalized training to support customers with our know-how and experience, e.g.

- Damage prevention
- Reprocessing and hygiene
- Scope handling and troubleshooting

Click here for more:

<https://network.pentaxmedical.eu>